



Beas Manufacturing 2026.04

Release Notes

04/29/2026



Highlights

BEAS WEB CLIENT:

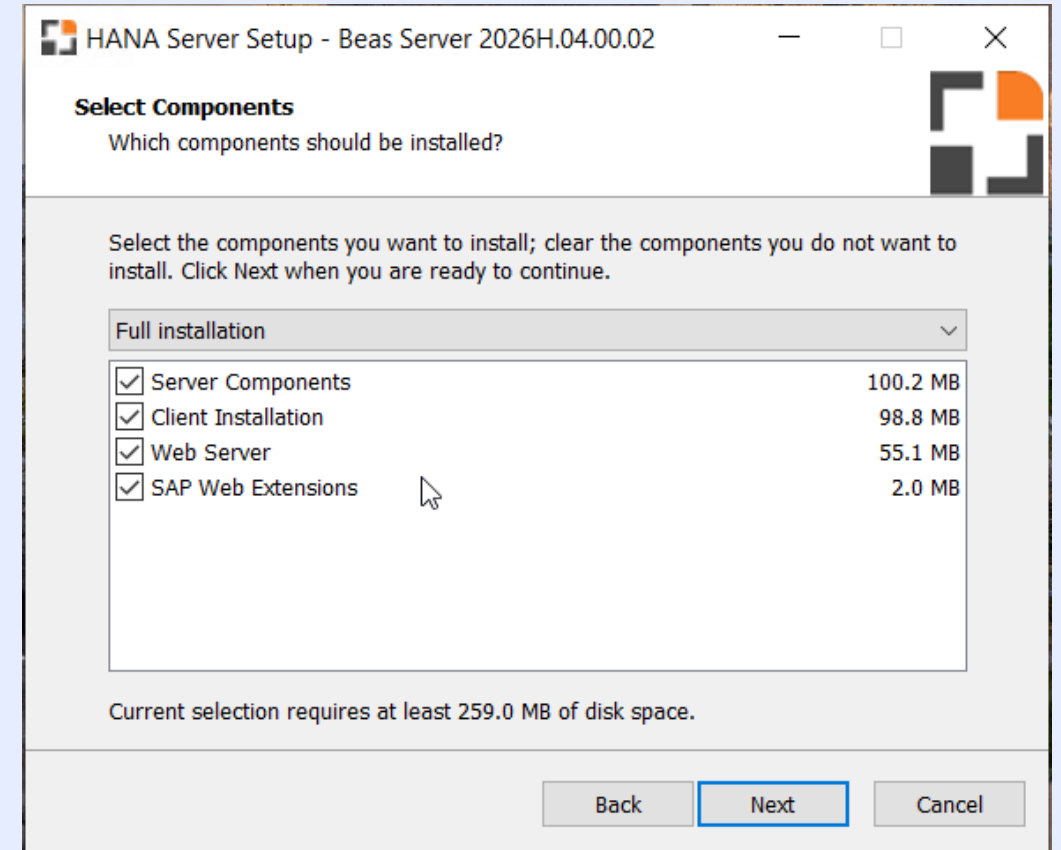
- New web server installation
- SAP Web Extensions Installation (Mtar Files)
- .NET backend core
- Angular Front end core
- New Cockpit KPIs
- Inventory History: Modernized with Operational insights
- Inventory Movement List
- Master Data
- Bill of Materials
- Material requirements
- Routing
- Work Order Status

WEB

Beas Web Client: Web Server Installation

Server Installation steps:

1. Launch the Beas Server Installer and select Destination Location to save the files.
2. Select Components: Web Server + SAP Web Extensions, click Next and Install.
3. Configure the SAP Service Layer connection by entering the server name and port number to install to.
4. Configure the database connection by selecting the database type (MSSQL / HANA), providing the database server name and the database server credentials
5. Configure the HTTPS port for the Beas Web Client. Default: 40200, as SAP Web Solution has 40000.
6. Configure the HTTP Base Port for the Beas Legacy. API Default: 50200, as SAP Service Layer has 50000.
7. Configure the SSL/TLS certificates for HTTPS: select "Generate a self-signed certificate automatically", click Next and Install.



WEB

Beas Web Client: SAP Web Installation (Mtar Files)

After the installation of the Web server, a new dialog box appears to start the Beas SAP Web Extensions setup:

1. Enter the Beas Web Server URL and the installation path where the extension files (.mtar) will be copied.
2. Enter the connection details for your SAP Business One Extension Manager and click **Next** to finish installation.
Note: The implemented .mtar extension files are generated automatically and uploaded to the SAP solution.
Company Assignment: Assign the Beas Web Client to all companies, no companies or selected companies located on the current server.
3. Go to the SAP Business One Extension Manager to verify that the extensions have been installed **(a)**, and assigned to all databases **(b)** selected in step 2:

The screenshot displays the SAP Business One Extension Manager interface. The top navigation bar includes 'SAP Business One Extension Manager', 'Welcome b1siteuser', 'System Landscape Directory', and 'Help'. The main area is divided into two panels.

Left Panel (Company Assignment): Shows the 'Company Assignment' tab. It features 'Import' and 'Remove' buttons and a table with the following data:

Name	Type
BeasManufacturingWebClientTiles	WebClientExtension
BeasManufacturingWebClient	WebClientExtension

Right Panel (Company List and Extensions): Shows the 'Company List' and 'Extensions' tabs. The 'Company List' shows a selection of 'SBO_DEVELOPMENT'. The 'Extensions' tab shows a table of installed extensions:

Database Name	Company Name	Version	Provider	Enabled	Settings	Status
SBO_DEVELOPMENT	DEVELOPMENT JMC	1000310				
Extensions						
Assign Unassign						
Name	Type	Version	Provider	Enabled	Settings	Status
BeasManufacturingWebClientTiles	WebClientExtension	2026.4.0	Boyum IT Solutions	<input checked="" type="checkbox"/>	Edit	OK
BeasManufacturingWebClient	WebClientExtension	2026.4.0	Boyum IT Solutions	<input checked="" type="checkbox"/>	Edit	OK

WEB

Beas Web Client: .NET backend core

NEW functionality:

Our new, modern backend server is built with ASP.NET Core to serve data to the SAP and Beas Web Client. It connects directly to the database and to the SAP Service Layer. This simplifies the installation and the configuration of a secure https connection with the SAP Web Client extension, with no need of using extra tools.

The server provides OData-enabled endpoints for some Beas entities, database switching, and supports both MSSQL and SAP HANA databases.

WEB

Beas Web Client: Angular Frontend core

NEW functionality:

New modern web-based client for Beas Manufacturing. It follows SAP Fiori design guidelines for a familiar and consistent user experience, with support for multiple languages and themes. It can run in any browser (PC or mobile devices)

Currently available views include:

- Item BoM and Operations
- Production Cockpit
- Inventory History
- Inventory Movements
- Material Requirements
- Work Order Status

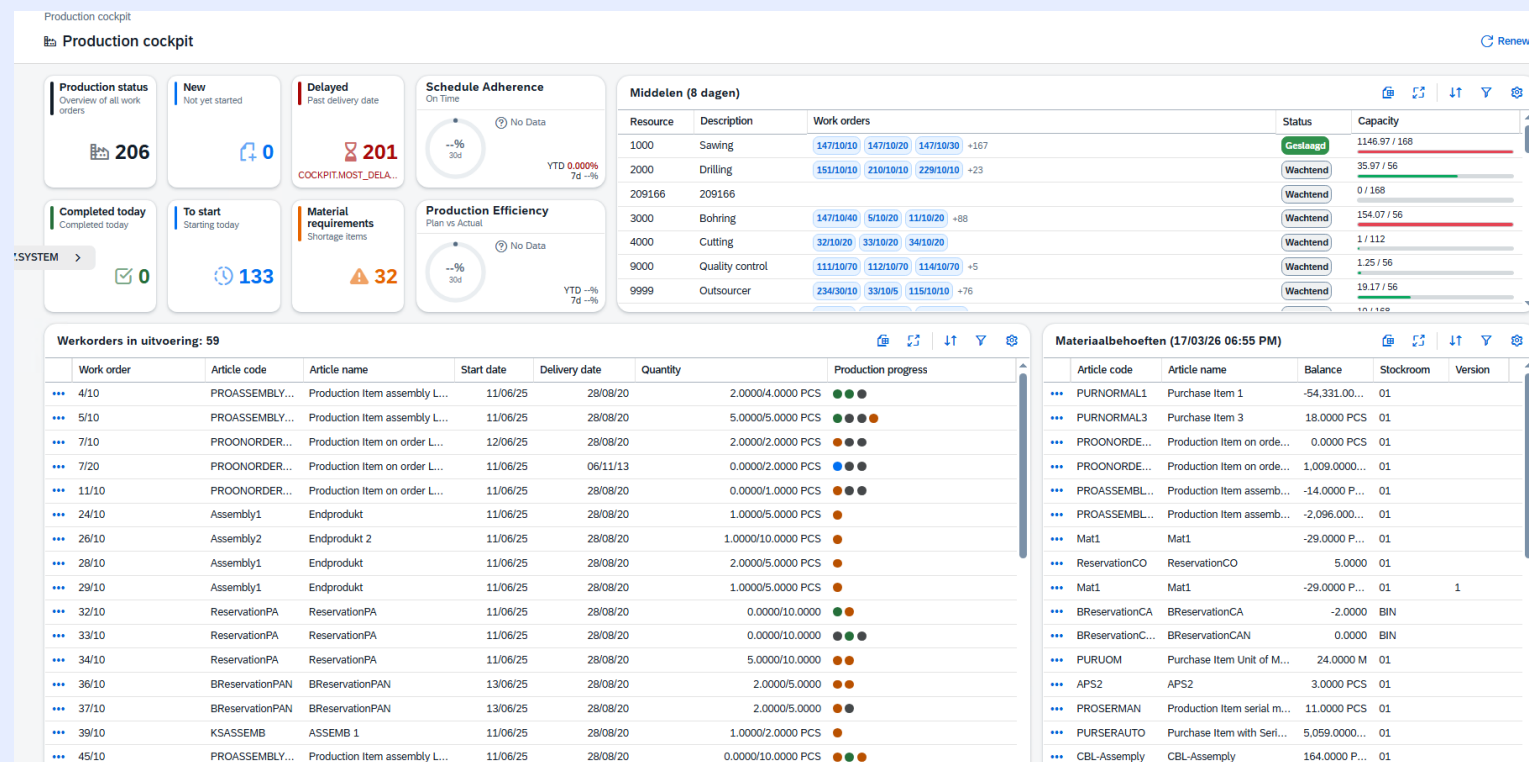
WEB

Beas Web Client: New Cockpit KPIs

NEW FUNCTIONALITY: New cockpit in the Beas Web Client with visual improvements, new KPIs and new actions.

Two new KPI cards have been added:

- *Schedule Adherence:* Shows the percentage of work orders that were completed on time compared to their planned finish date.
- *Production Efficiency:* Compares planned vs. actual time and material consumption for work orders. Higher efficiency means less time and fewer materials used than originally planned.



New actions have been added for the cockpit:

- Navigate to the Material Requirements view directly from a Work Order in progress.
- Navigate to the Inventory History view.

This view is only accessible from the SAP Web Client (Beas Manufacturing extension).

WEB

Beas Web Client: Inventory History: Modernized with Operational insights

NEW FUNCTIONALITY:

New inventory history view in the Beas Web Client that goes beyond transaction history. For a given item, it shows **stock levels**, **open documents**, and **consumption analysis** in a single page.

The view includes:

- A header with summary info (on hand, available, committed, ordered, on production, and reserved quantities).
- Stock distribution by warehouse, with drill-down into bin locations, batch numbers, serial numbers, and reservations.
- 12-month consumption trend chart.
- Inventory health indicators: coverage days and turnover.
- Open production, sales, and purchase orders.
- MRP plan details with plan selector.
- Open transfer requests.

This view is accessible from the Sales Order and Item views in the SAP Web Client (Beas Manufacturing extension).

WEB: Beas Web Client: Inventory History: Modernized with Operational insights

Inventory History

Inventory History

[Stock Movements](#)

Item Code


M0000003

[Go](#) [Clear](#)

Open Production Orders (102)

Work Order	Status	Planned	Actual	Required Date
617/20/10	Open	1.500	0.000	12-March-2026
572/10/10	Open	1.000	0.000	13-February-2026
533/10/10	Open	1.500	0.000	16-December-2025
504/10/10	Open	1.500	0.000	12-November-2025
505/10/10	Open	1.500	0.000	12-November-2025
480/10/10	Open	1.500	0.000	10-November-2025
476/10/10	Open	1.500	0.000	28-October-2025
474/10/10	Open	1.500	0.000	27-October-2025
475/10/10	Open	1.500	-200.000	27-October-2025
472/10/10	Open	1.500	0.000	24-October-2025

Open Sales Orders (0)

Doc #	Customer	Open Qty	Ship Date
 <p>No open sales orders When there is, you'll see it here.</p>			


Open Purchase Orders (1)

Doc #	Vendor	Open Qty	Ship Date
20250064	Adrià Pulido González	1.500	25-September-2025

MRP Results (92) | MRP Plan: 1 - MRP - Capacity (All) | Date Last Calculation: 19-February-2026

T...	Name	Info	On Hand	Inflow	Outflow	Balance	Date
	WO:73-10-10 WO_000052	Warehouse	882.000	0.000	13.500	868.500	12-May-2025
	WO:123-10-10 WO_000072	Warehouse	868.500	0.000	7.500	861.000	02-June-2025
	WO:264-20-10 WO_000093	Warehouse	861.000	0.000	225.000	636.000	19-June-2025
	WO:55-10-10 WO_000033	Warehouse	636.000	0.000	12.000	624.000	16-July-2025
	WO:56-20-10 WO_000034	Warehouse	624.000	0.000	7.500	616.500	16-July-2025
	WO:59-10-10 WO_000037	Warehouse	616.500	0.000	9.000	607.500	16-July-2025
	WO:61-10-10 WO_000039	Warehouse	607.500	0.000	11.700	595.800	16-July-2025

Open Transfer Requests (0)

Doc #	Doc Date	From Warehouse	To Warehouse	Quantity
 <p>No open transfer requests When there is, you'll see it here.</p>				

WEB

Beas Web Client: Inventory Movement List

NEW functionality:

New view in the Beas Web Client to check inventory movements. It shows all stock transactions (goods receipts, issues, transfers, invoices, production orders):

The view includes:

- In and out quantities per transaction, color-coded (green for in, blue for out).
 - Batch, serial number, and bin location details.
 - Filters by item, batch/serial, warehouse, and date range.
- This view is accessible from the BEAS Web Client, in Inventory History

Inventory Movements List

Inventory Movements List

Item Code Batch / Serial Warehouse Date Range -

[Go](#) [Clear](#) [Adapt Filters](#)

Document...	Line	Journal Remark	Date	Reference 2	Item Code	Item Description	Batch / Serial	Input Quan...	Output Qu...	Bin Location	Price	Currency	Inventory Price	Input Quantit...
43	0		26-March-2026	BIN_MAN	M0000015	Material 15 - Managed by batches		18.750						
43	0	Traslados -	26-March-2026	BIN_MAN	M0000015	Material 15 - Managed by batches	MB00000001	18.750				EUR		
43	0	Traslados -	26-March-2026	BIN_MAN	M0000015	Material 15 - Managed by batches	MB00000001		18.750			EUR		
43	0	Traslados -	26-March-2026	BEAS_BIN	M0000015	Material 15 - Managed by batches	MB00000001	18.750				EUR		
43	0	Traslados -	26-March-2026	BEAS_BIN	M0000015	Material 15 - Managed by batches	MB00000001		18.750			EUR		
20250362	0	Salida de mercancías	23-March-2026	000621010	M0000007	Material 7			5.000		1.50 EUR	EUR	1.50 EUR	
20250447	0	Entrada de mercancías	23-March-2026	000621020	FP0006	Final product - As an order item		1.000			11.17 EUR	EUR	11.17 EUR	11.170
20250361	0	Salida de mercancías	23-March-2026	000621020	M0000011	Material 11			1.100			EUR		
20250446	0	Entrada de mercancías	23-March-2026	000621020	FP0006	Final product - As an order item		1.000			11.17 EUR	EUR	11.17 EUR	11.170
20250360	0	Salida de mercancías	23-March-2026	000621020	M0000011	Material 11			1.100			EUR		

WEB

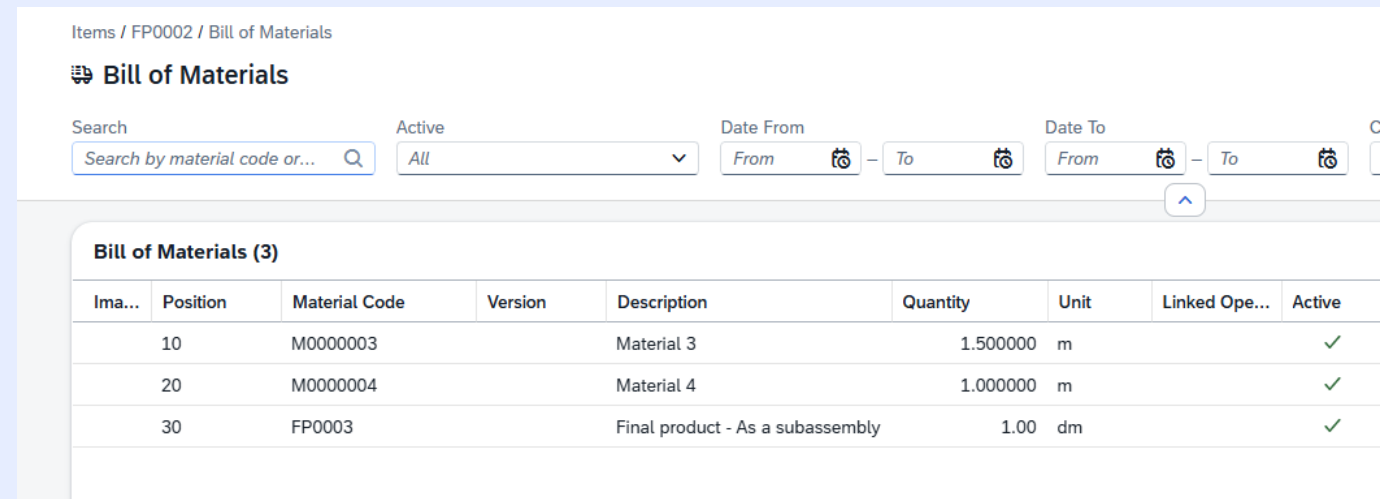
Beas Web Client: Bill of Materials

NEW functionality:

Item BoM & Routings in new Beas Web Client.

View and navigate into an item's Bill of Materials and Operations (Routings) from the Beas Web Client.

You can access the list of materials and the list of operations for each item, by opening a specific material or routing to see its details. Access is available from the item detail in the SAP Web Client by using the Beas Manufacturing extension.



Items / FP0002 / Bill of Materials

Bill of Materials

Search: Active: Date From: - Date To: -

Bill of Materials (3)

Ima...	Position	Material Code	Version	Description	Quantity	Unit	Linked Ope...	Active
	10	M0000003		Material 3	1.500000	m		✓
	20	M0000004		Material 4	1.000000	m		✓
	30	FP0003		Final product - As a subassembly	1.00	dm		✓

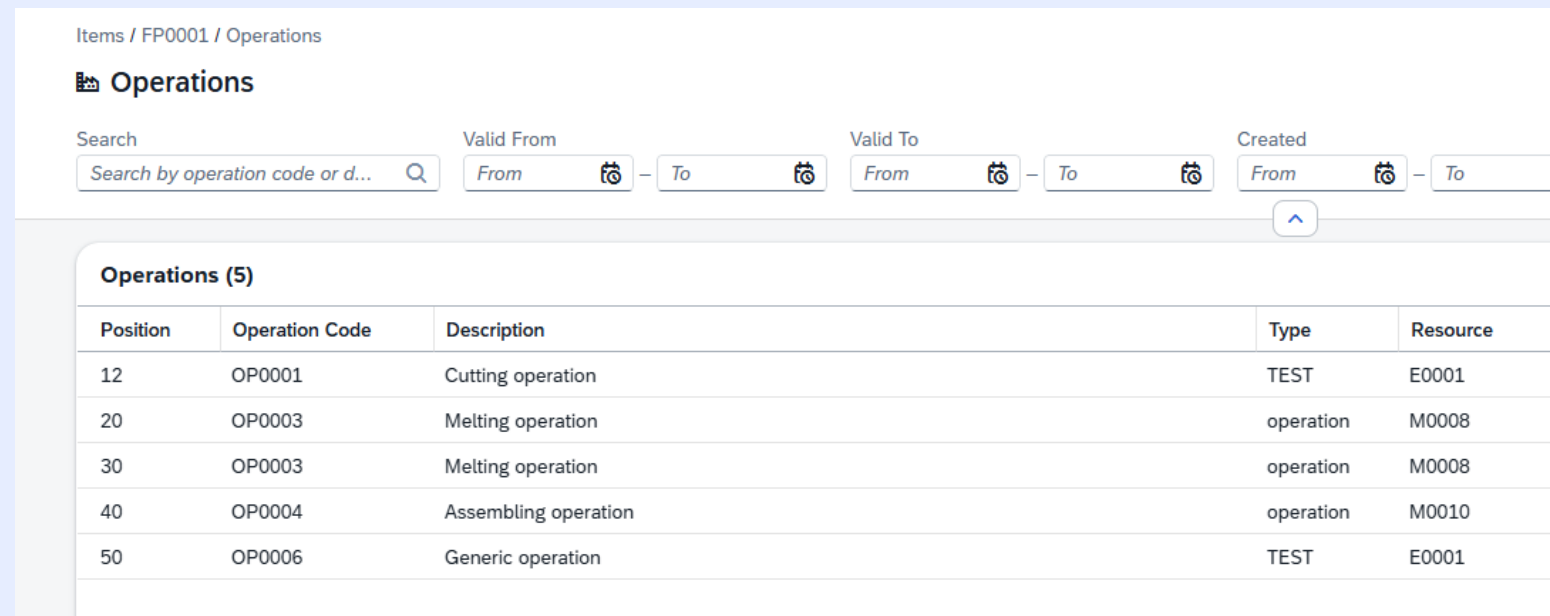
WEB

Beas Web Client: Routing

NEW functionality:

In the new Beas Web Client you can view and navigate into an item's Bill of Materials and Operations (Routings) from the Beas Web Client.

You can access the list of materials and the list of operations for each item, by opening a specific material or routing to see its details. Access is available from the item detail in the SAP Web Client by using the Beas Manufacturing extension.



Items / FP0001 / Operations

Operations

Search: Valid From: - Valid To: - Created: -

Position	Operation Code	Description	Type	Resource
12	OP0001	Cutting operation	TEST	E0001
20	OP0003	Melting operation	operation	M0008
30	OP0003	Melting operation	operation	M0008
40	OP0004	Assembling operation	operation	M0010
50	OP0006	Generic operation	TEST	E0001

WEB

Beas Web Client: Bill of Materials details

NEW functionality:

Inside the Item's BoM, you can check all the details of a material in a more organized and modern way.

Navigate between positions using the navigation arrows, and view all related information grouped in clearly labeled sections and tabs.

The screenshot shows the 'Bill of Materials' details for item 'FP0001' at position '20'. The material code is 'M0000001' and it is labeled 'Material 1'. The page is organized into sections and tabs.

Navigation: Refresh, Home, Up, Down, and Back arrows are visible at the top left.

Material Summary:

Position	Active	Warehouse Code	Version
20	Yes	02	

General Information Tab:

- General Information:**
 - Position: 20
 - Material Code: M0000001
 - Version: (empty)
 - Description: Material 1
 - Own Drawing No.: DRAWING
 - Active
 - Use Own Description
- Quantities:**
 - Quantity: 12.345
 - Unit of Measure: dm
 - Quantity Per: 21.000 km
 - Scrap Fixed Quantity: 25.000 m
 - Scrap Percentage: 5.00 %
 - Rounding Type: Default
 - Rounding Decimals: 0
- Extra Details:**
 - Warehouse Code: 02
 - Linked Operation: 10
 - Length: 100.000 dm
 - Width: 12.000 mm
 - Height: 12.000 cm
 - Info: (empty)

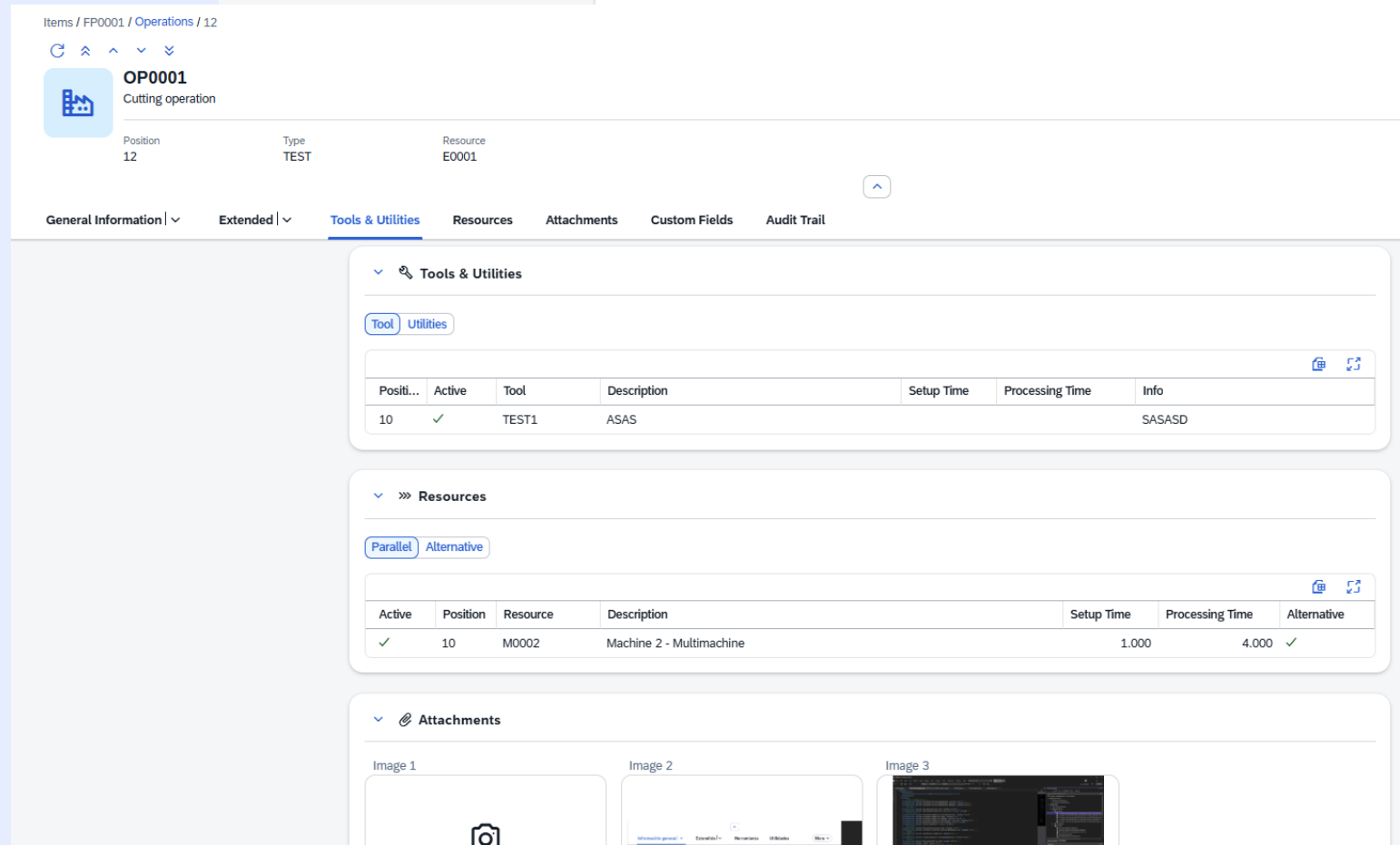
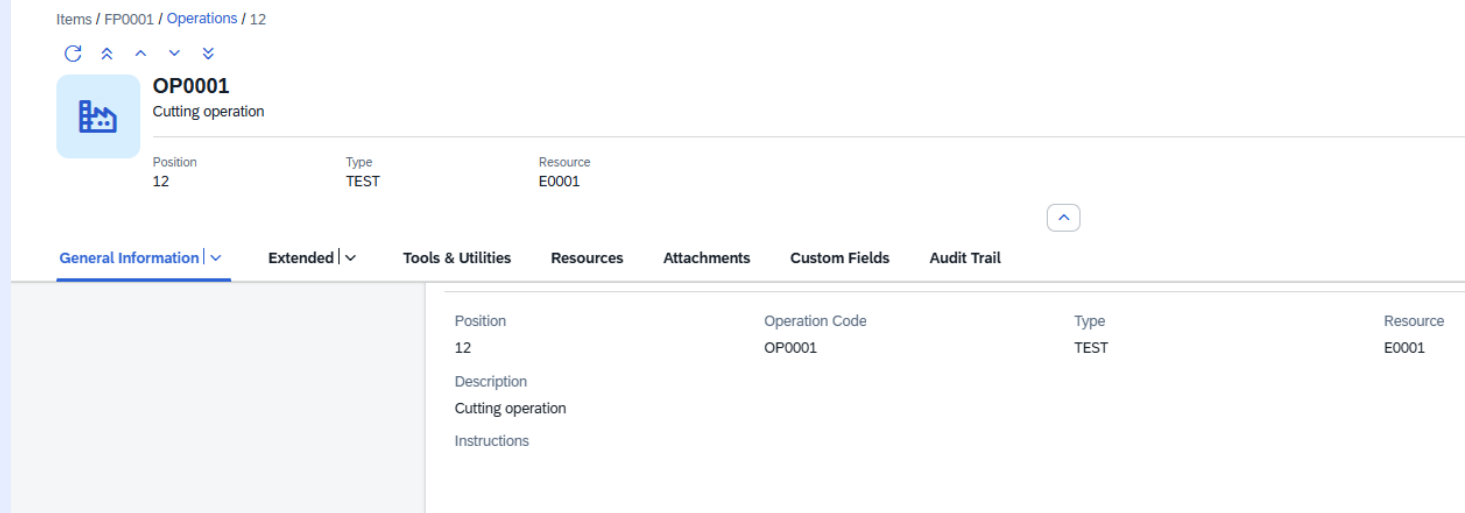
WEB

Beas Web Client: Routings details

NEW functionality:

Inside the Item's Operations, you can also check all the details of an operation in a more organized and modern way.

Navigate between positions using the navigation arrows, and view all related information grouped in clearly labeled sections and tabs.



WEB

Beas Web Client: Material requirements

NEW functionality:

New view in the Beas Web Client to check material needs for Work orders. Search by Work order to see all BOM materials with their stock coverage and shortage status.

The view includes:
 Required, open, booked, and reserved quantities per material.
 Coverage bar indicating available stock per material.
 This view is accessible from the Beas Web Client, in the Production Cockpit's Work Orders in Progress.

Material Requirements

Material Requirements

Barcode: Work Order ID: Position ID: Date Range: From To Status: Only Shortage

Material Requirements (12)

Status	Coverage	Item Code	Description	Needed Qty	Open Qty	Booked	Reserved	Stock	Default Whs Qty	Warehouse
Closed		M0000001	Material 1	12.000000 m	12.000000 m	0.000000 m	0.000000 m	1,948.59900...	1,948.599000 m	01
Closed		M0000002	Material 2	25.000000 m	25.000000 m	0.000000 m	0.000000 m	3,067.95000...	3,067.950000 m	01
OK	100%	M0000009	Material 9	300.000000 m	100.000000 m	0.000000 m	200.000000 m	1,197.00000...	1,197.000000 m	01
OK	100%	M0000013	Material 13	110.000000 m	0.000000 m	0.000000 m	110.000000 m	165.900000 m	165.900000 m	01
OK	100%	M0000014	Material 14	110.000000 m	0.000000 m	0.000000 m	110.000000 m	165.900000 m	165.900000 m	01
Not OK	25%	M0000007	Material 7	1,500.00000...	1,290.00000...	210.000000 m	0.000000 m	170.000000 m	170.000000 m	01
Not OK	17%	M0000008	Material 8	1,200.00000...	1,200.00000...	0.000000 m	0.000000 m	200.000000 m	200.000000 m	01
Not OK	56%	FP0006	Final product - As an order i...	300.000000 m	300.000000 m	0.000000 m	0.000000 m	167.400000 m	167.400000 m	01
Not OK	11%	M0000011	Material 11	330.000000 m	330.000000 m	0.000000 m	0.000000 m	35.000000 m	32.800000 m	01
Not OK	19%	M0000012	Material 12	330.000000 m	330.000000 m	0.000000 m	0.000000 m	62.500000 m	60.300000 m	01
OK	100%	M0000001	Material 1	10.000000 m	0.000000 m	10.000000 m	0.000000 m	1,948.59900...	1,948.599000 m	01
OK	100%	M0000002	Material 2	20.000000 m	0.000000 m	20.000000 m	0.000000 m	3,067.95000...	3,067.950000 m	01

WEB

Beas Web Client: Work Order Status view

NEW FUNCTIONALITY:

New view in the Beas Web Client to track the production status of Work orders. Search by Sales order number, Sales order line, or customer to see all related Work orders with their production progress and operation details.

The view includes:

Work order grid showing item, status, quantity progress (made vs. planned), delivery dates, and operation status.

Risk tags that flag delayed, blocked, or quantity-risk work orders.

Operation progress dots per Work order with tooltip details.

This view is accessible from the SAP Web Client (Beas Manufacturing extension).

WO Status

WO Status

SO Number:
 SO Line:
 Customer:
 Only Open WOs

Work Orders (6)										
Work Order	SO Number	Item	Customer	Status	Risk / Alert	Qty. Progress	Plan Start	SO Due Date	WO Delivery	Operations
5/10	20250001/0	FP0004 Final product - With an order item	C0000001 Adrià Pulido González	In Progress	Delayed	0 / 300	29-July-2025	31-January-20...	30-July-2025	●●
5/20	20250001/0	FP0006 Final product - As an order item	C0000001 Adrià Pulido González	Not Started	Delayed	0 / 300	28-July-2025	31-January-20...	29-January-20...	●●
6/10	20250001/1	FP0005 Final product - With a 'phantom' ite	C0000001 Adrià Pulido González	Started	Delayed	31 / 250	29-July-2025	31-January-20...	30-July-2025	●●
36/10	20250001/1	FP0005 Final product - With a 'phantom' ite	C0000001 Adrià Pulido González	Started	Delayed	0 / 250	29-July-2025	31-January-20...	30-July-2025	●●
383/20	20250001/0	FP0004 Final product - With an order item	C0000001 Adrià Pulido González	Not Started	Delayed	0 / 1	30-September...	31-January-20...	01-October-20...	●●
563/10	20250001/	EXT0001 External Item 1	C0000001 Adrià Pulido González	Not Started	Delayed	0 / 0	29-January-20...	31-January-20...	30-January-20...	●●



✉ sales@boyum-it.com

🌐 boyum-solutions.com

🌐 linkedin.com/company/boyumit

📺 youtube.com/user/boyumit

📷 instagram.com/boyumit/

Denmark

- Boyum IT Solutions A/S

Germany

- Boyum IT Solutions GmbH

USA

- Boyum IT Inc.

Belgium

- Boyum IT Solutions bv

Spain

- Boyum IT Solutions Spain S.L.

Hungary

- Budapest Development Center

Bulgaria

- Paperflow Service Center