

BEAS MANUFACTURING

2022.04
RELEASE NOTES

APR 2022



2022.04 Highlights

MRP

- New Action available in MRP for Creating Transfer request to a replenishment warehouse, The new function allows the different warehouses to create Inventory Transfer requests instead of purchase orders to the centralized warehouse, by selecting the Replenishment Warehouse in the MRP.
- Usability improvement of the order recommendation, new button for creating document in massive mode (Purchase, Production and transfers request also) , With this new option the user can create all of them at the same time.

WMS integration

- Synchronization of the Beas reservation and Produmex WMS Locking systems, now Reservations created by each system are automatically reflected in the other system, avoiding the possibility of over-reservation.

WebApps

- WO Issue by SSCC: for WMS customers and users without WMS installation also, the user can scan the SSCC barcode, and the system will load all available materials of a Pallet and related to the Work order in the issue process.

BeasScript

- Better assignation of Beas Script User to the SQL Editor and debug scripts window



MRP

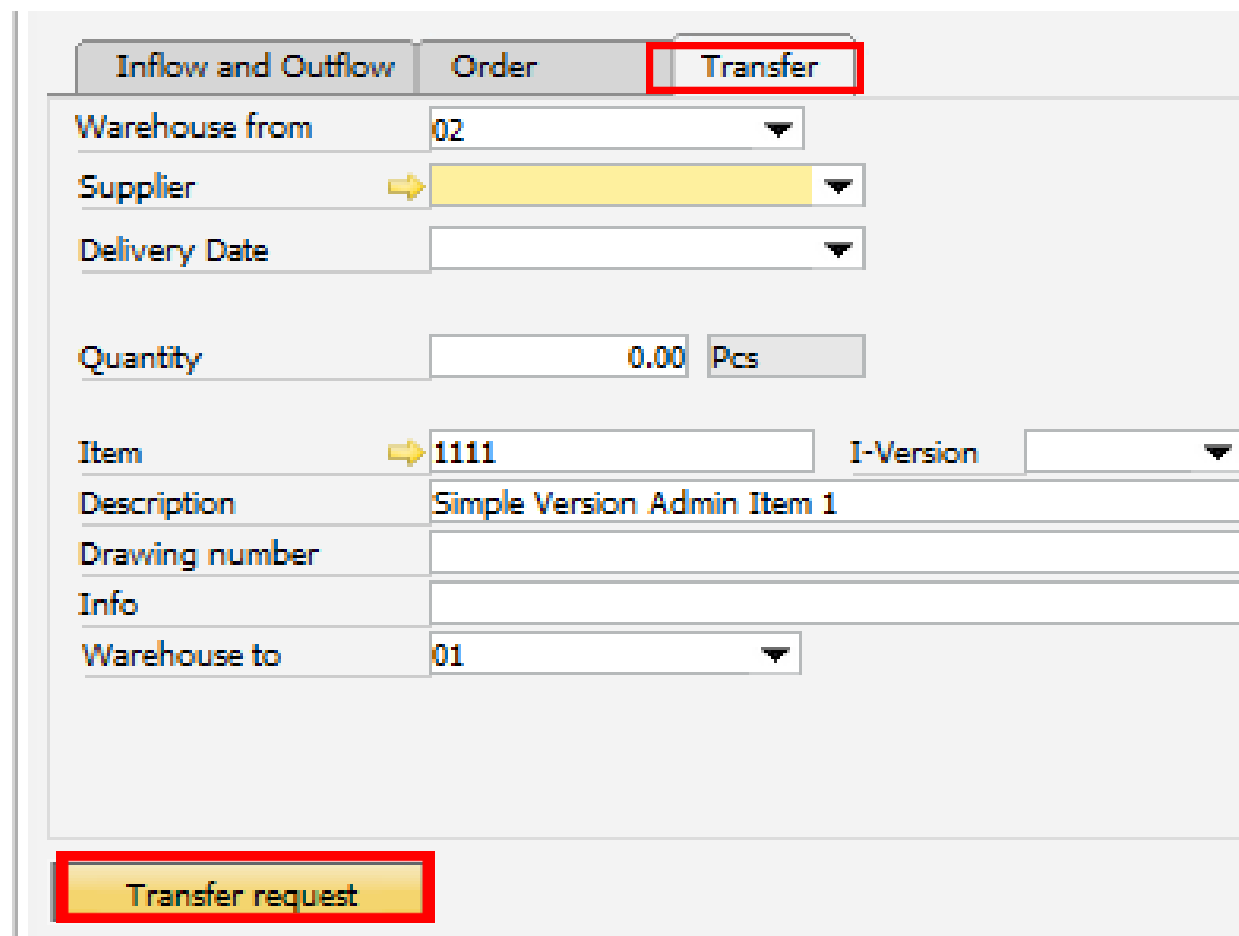
Inventory Transfer request

NEW function:

A **new tab "Transfer"** was added in Order recommendation where you can make settings for Inventory transfer request created from MRP. The tab is only available for Items that are marked as Buy, and are visible if, at least, a Replenishment warehouse was selected.

Transfer request button: Create the transfer request for the item directly from this window. The request document will be visible in the Inflow and Outflow tab.

Check our demonstration video:



The screenshot displays the MRP window with three tabs: 'Inflow and Outflow', 'Order', and 'Transfer'. The 'Transfer' tab is highlighted with a red border. Below the tabs, the form contains the following fields:

- Warehouse from: 02
- Supplier: (Yellow arrow icon)
- Delivery Date: (Dropdown arrow)
- Quantity: 0.00 Pcs
- Item: 1111 I-Version: (Dropdown arrow)
- Description: Simple Version Admin Item 1
- Drawing number: (Empty field)
- Info: (Empty field)
- Warehouse to: 01

At the bottom of the window, a yellow button labeled 'Transfer request' is highlighted with a red border.

Window: *mrp_view_masterrahmen*



MRP

NEW button arrangement and usability

When clicking on “Mode” (1.) you can define an Action for each item.

The Purchase and Production request buttons have been merged into the new “**Create request**” (2.) button. With this you can generate documents for each line with one click according to what was defined in the Configuration wizard:

Buy actions: Purchase request

Make actions: Production request

Transfer actions: Inventory transfer request

For Transfer actions you must define a Replenishment warehouse in the corresponding field (3.)

The Replenishment stock is indicated in a new column (4.)

Order Recommendation (7) DEFAULT MRP

Purchase						
№15 ...	Item	I-Version	Action	Warehouse	Repl. Stock	Description
1	10		Transfer	02	0.000	default
2	1111		Buy		1.000	Simple Version Admin I
3	1111-1		Make		0.000	Simple Version Admin I
4	1112				0.000	Import Test
5	19780404				0.000	Housind Damper Disc M
6	2511215				0.000	Fahrrad
7	25112150001_000				0.000	Fahrrad 28 Zoll blau
8	25112150002_000				0.000	Fahrrad 28 Zoll
9	25112150003_000				0.000	Fahrrad 28 Zoll
10	25112150004_000				0.000	Fahrrad 26 Zoll
11	25112150005_000				0.000	Fahrrad 26 Zoll
12	2738458				2.000	Hello, this 'my' "World"

Buttons: End, Mode, Filter, Create request, Report Production Request

Window: `mrp_view_masterrahmen`

WebApps

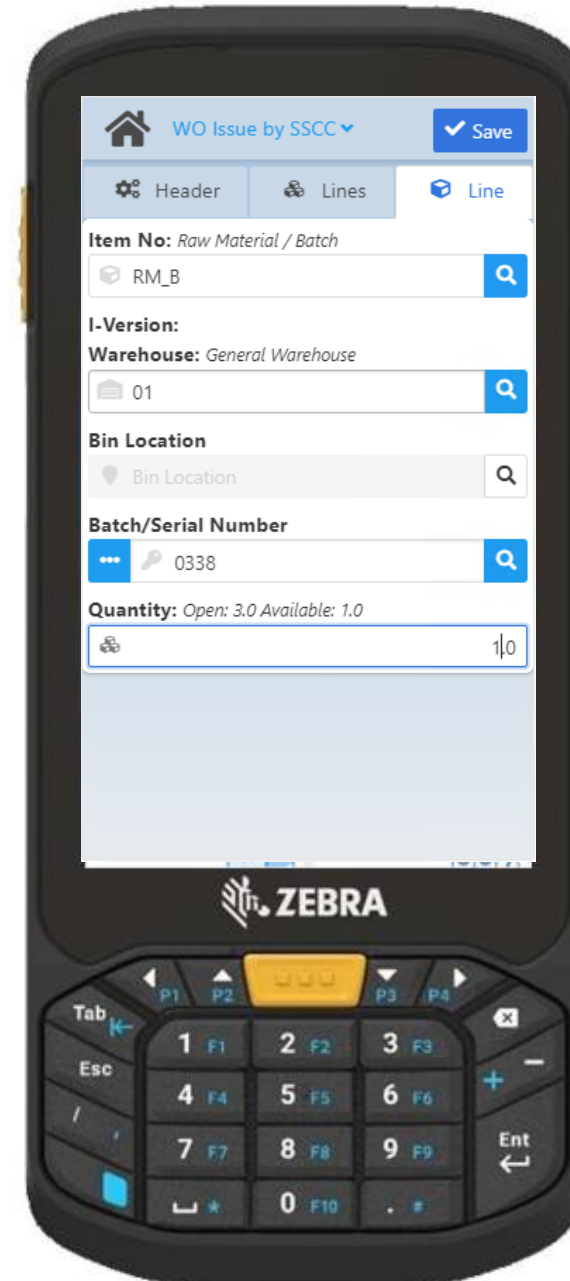
NEW WebApp: "WO Issue by SSCC"

With this new app you can create a work order material issue based on SSCC information.

You can select a Work order manually or by Bar code.

The app displays all related lines.

You can scan GS1-128 barcode or manually choose material that you want to issue for the work order.



WO Issue by SSCC



WO Issue by using SSCC
barcode



WebApps



WO Issue by SSCC



WO Issue by using SSCC
barcode

NEW WebApp: "WO Issue by SSCC"

After selecting the WO position, the system switches to the "Lines" tab.

In this tab you can click on an item to add the quantities to allocate in the last tab "Line".

After entering the mandatory information, click save to create the issue document.

The screenshot displays the 'WO Issue by SSCC' web application interface. The main window is titled 'WO Issue by SSCC' and 'Automatic Test'. It features a 'Filter' section and a table with columns: BoM, Item No, Item Name, Quantity, Open, Required, and WhsCode. The table contains the following data:

BoM	Item No	Item Name	Quantity	Open	Required	WhsCode
10	AB0020000	Gear Box, Semiconductor, Rhx08	23.00 Pcs	586.00 Pcs	610.00 Pcs	09
20	2738546	Reservation - Doubletest	0.000 kg	4.00		
30	AB0020001	default	12.00 Pcs	277.00		
				0 / 56.00 Pcs		
40	2738546	Reservation - Doubletest	0.000 kg	3.00		
				0 / 1.000 kg		

A modal window is open over the table, showing the 'Line' tab. It contains the following fields:

- Item No: Raw Material
- RM_WorkFlow
- I-Version:
- Warehouse: General Warehouse
- 01
- Bin Location: 8.0001 LUID(755) SSCC(000000000000006491)
- 8.0001
- Batch/Serial Number
- Batch/Serial Number
- Quantity: Open: 8.900 Available: 35.000
- 23.000

WebApps



WO Issue by SSCC



WO Issue by using SSCC
barcode

NEW WebApp: "WO Issue by SSCC"

To define how to handle an SSCC in a WO Issue, we created a setting with three parameters in the App settings.

Open Quantity:

For the issue process, the app only assigns open quantity for each BoM position.

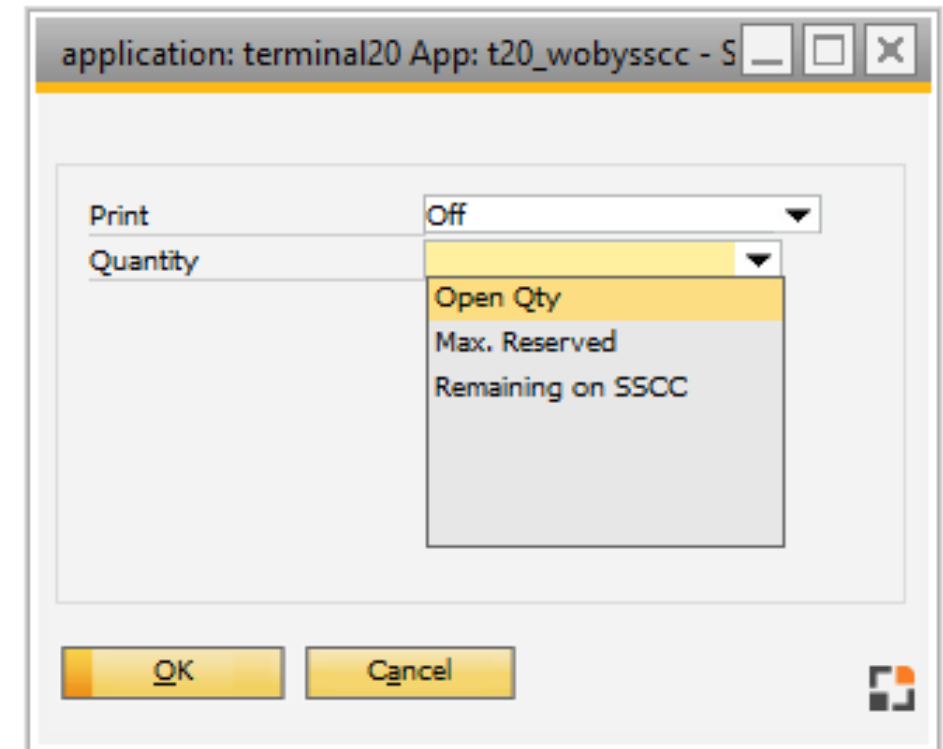
Max. Reserved:

Maximum reserved quantity - for the issue process, the system only assigns the quantity that is already reserved for an item.

Remaining on SSCC:

For the issue process, the system assigns all quantities that are on the SSCC.

Note: If the Work order has 1< BoM positions for the same item, Beas assigns all remaining quantities on the SSCC to the first BoM position.



Window webwindow_user_setup.psr

WebApps

NEW WebApp: "WO Issue by SSCC"

If you are NOT a WMS customer, you can use this new app by taking advantage of the GS1 improvement, which provides for a faster registration of the material that has GS1 Code loaded with the corresponding Item code, batch number and quantity.



WO Issue by SSCC



WO Issue by using SSCC
barcode



WMS integration

Beas reservation and WMS locking systems synchronization

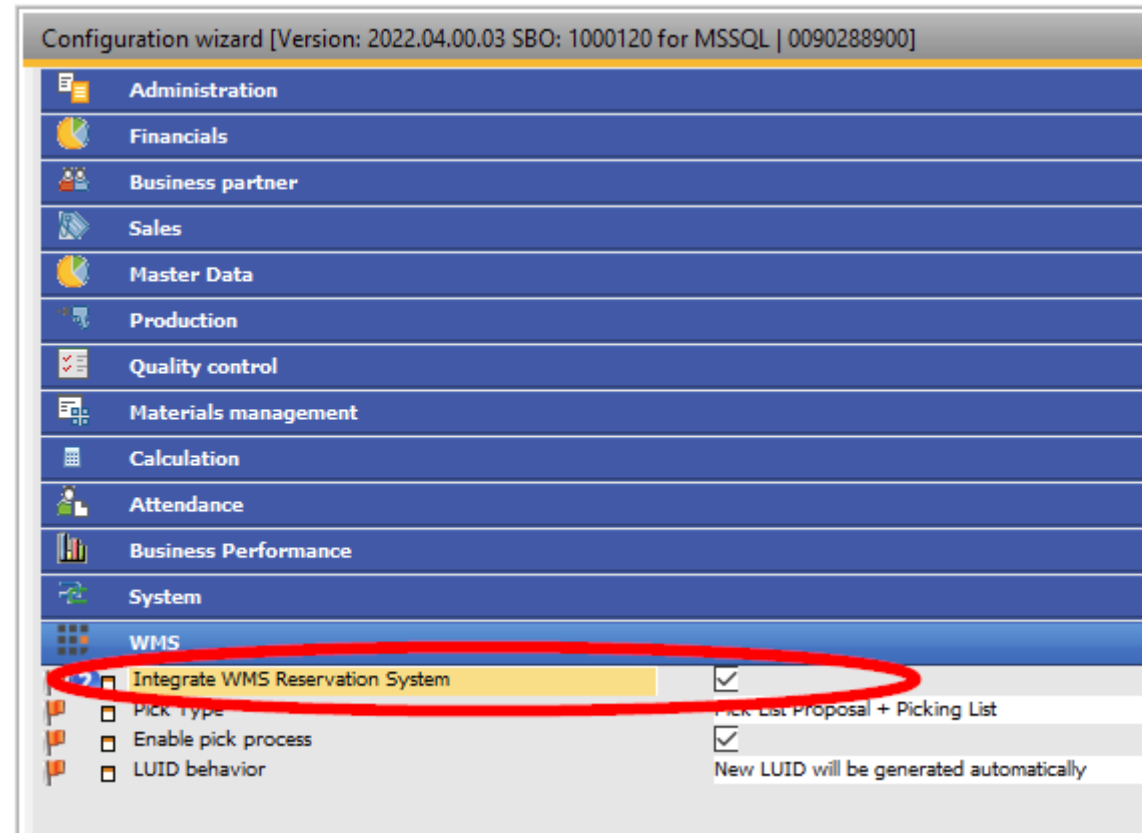
Locking (WMS) and reservations (Beas) created by each system are automatically synchronized and so reflected in the other system. Over-reservation is not possible.

The systems validate the reservation status before the creation of any SAP documents, and both systems ensure that reservation rules are not broken. Beas reservations can only be removed in Beas, and WMS locking can only be removed in WMS.

Beas:

The synchronization with the WMS Locking system can be activated in the Beas Configuration Wizard. The parameter is set to inactive by default.

Details and examples: https://help.beascloud.com/BEAS_WMS_integration/



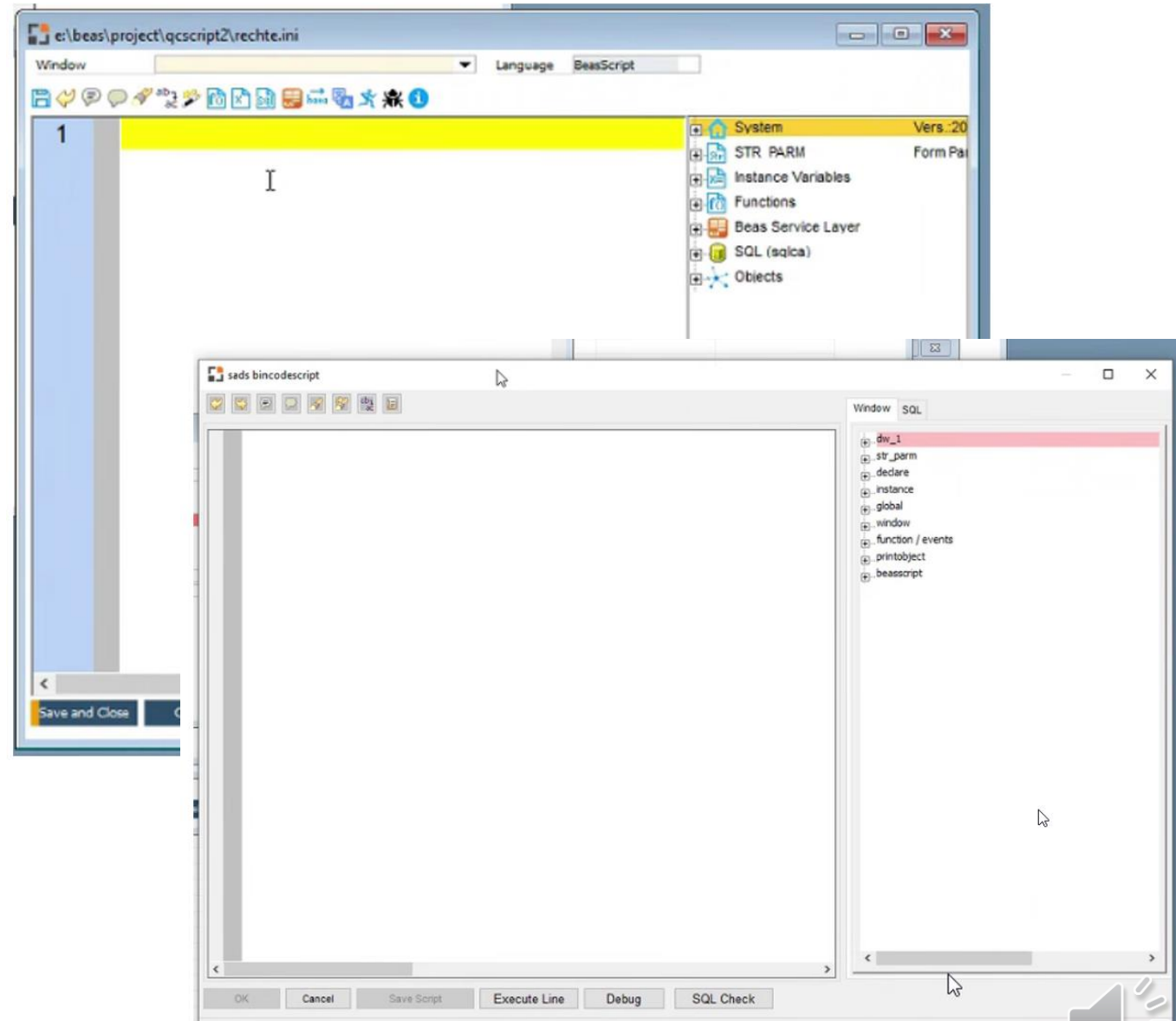
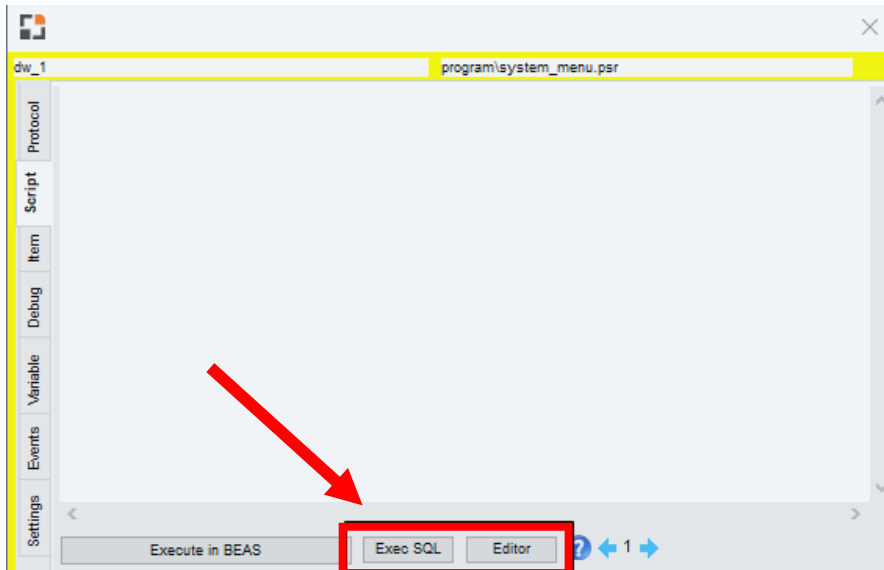
Window `system_option_struktur.psr`



BeasScript

Better assignation of Beas Script User Rights

In the 2022.04 version of Beas, we are introducing Beas Script user rights to limit users' access to the Beas Script Editor (Superusers always have full access).



Read **before**

The button arrangement in MRP order recommendation window has changed!

See details on pages 3-4, Beas Online Help and the related YouTube video!

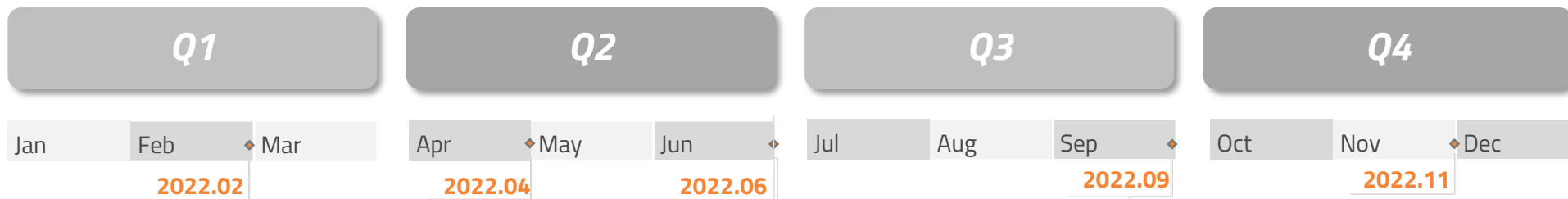
OLD:



NEW:

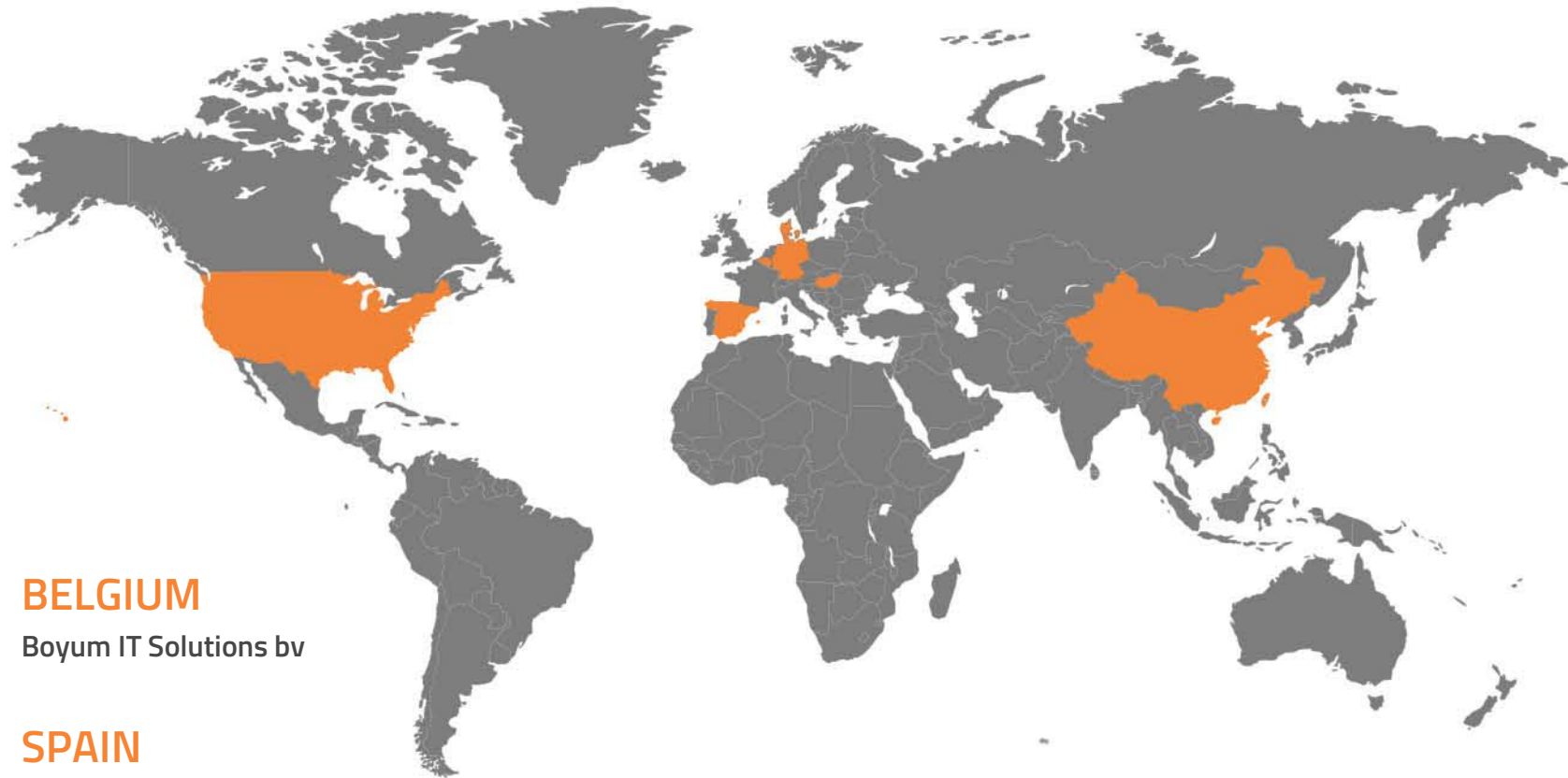


2022 **Planned** releases



This is the current state of planning and may be changed by Boyum IT Solutions at any time.





DENMARK

Boyum IT Solutions A/S

GERMANY

Boyum IT Solutions GmbH

USA

Boyum IT Solutions Inc.

CHINA

Boyum IT Solutions Shanghai Co. Ltd

BELGIUM

Boyum IT Solutions bv

SPAIN

Boyum IT Solutions Spain S.L.

HUNGARY

Boyum IT Solutions Hungary LTD

